

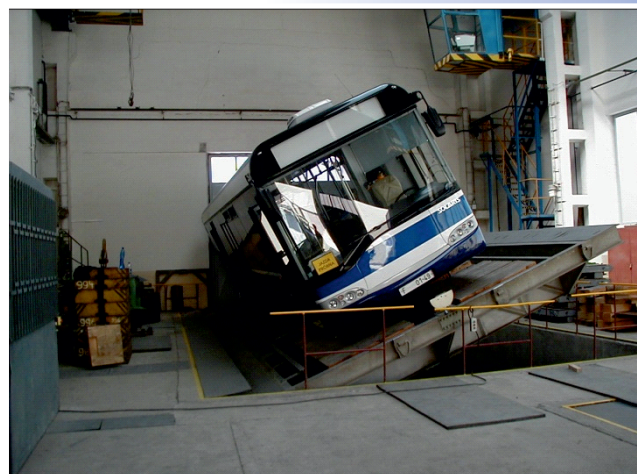
## THE TEST VEHICLE (ZkV)

### ACTIVITY:

- accredited tests;
- measurement of weight, dimensions, center of gravity wheeled and tracked vehicles;
- static lateral stability tests;
- static and dynamic tests of parameters of vehicles;
- special tests (transportability, swimmability, reliability, maintainability, reparability);
- approval testing of technical competence of military vehicles in cooperation with the Military Police;
- approval testing of technical competence of military vessels;
- testing brake.



Measuring the vehicle center of gravity



Static Transverse Tilt Test



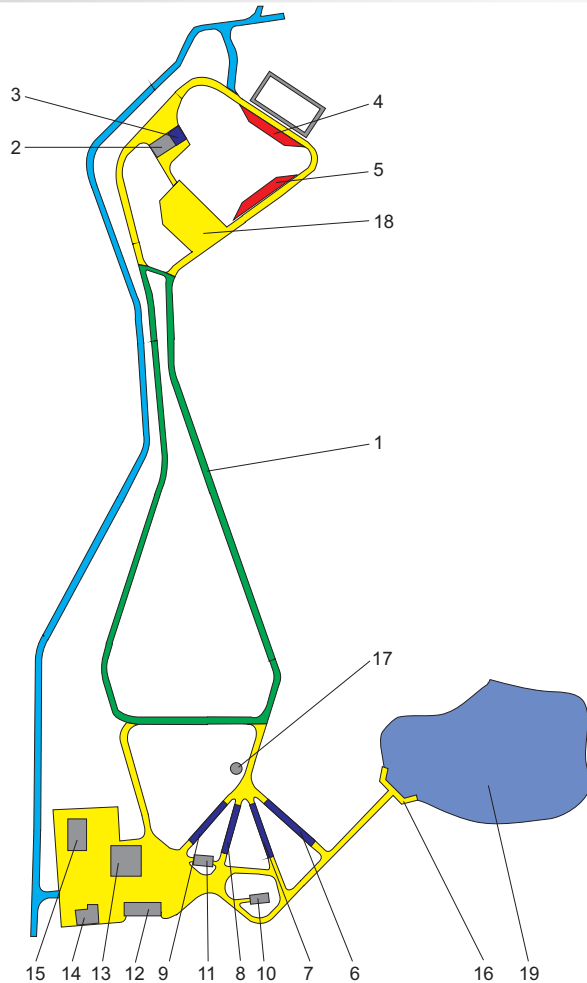
Testing of the vehicle's grade ability



Cruising tests



## The test site has available the off road circuit



### LEGEND:

- 1 - test track w-12, 5 m / l 2900 m
- 2 - steps 20, 40, 60, 80, 100, 120 cm
- 3 - third trench from 0.5 to 3 m
- 4 - panel roadway 5 / 100 m
- 5 - gravel roadway 5 / 100 m,  
concrete transverse waves 5 / 28 m
- 6 - slope 30° - 55 m
- 7 - slope from 25° to 60 m
- 8 - slope from 20° to 88 m
- 9 - slope from 15° to 118 m
- 10 - ford - 4.6 × 20 m, depth - 0.2 to 0.5 m
- 11 - muddy ford - 5 × 20 m, depth - 0.2 to 0.5 m
- 12 - canal (deep ford) - 5 × 20 m,  
depth to 2.5 m / raid 15° and 20°
- 13 - washing area with bridge
- 14 - service building
- 15 - testing area
- 16 - earth dam
- 17 - underground anchor
- 18 - testing area
- 19 - dam

